



Architect Norm Applebaum at Fox Hollow

**Norm Applebaum Architect**

Address: 9830 Edgelake Dr, La Mesa, CA 91941, USA

Tel: +1 619-463-1867

Email: normapplebaumaia@cox.net

Front & back cover: © John Durant, Fox Hollow

THE  
**AMERICAN HOUSE** 100  
Contemporary Homes



Introduction by Ian Volner

THE  
**AMERICAN HOUSE**  
100 Contemporary Homes

Edited by Hannah Jenkins

**images**  
Publishing





Perched atop a tree-covered knoll on a 320-acre (129-hectare) site in West Paso Robles, this magnificent home was designed around three multi-trunked oak trees. The structure becomes one with the site as it weaves around the trees, integrating with nature and framing views in all directions.

The design process began with an initial program supplied by the client. From there, a floor plan was devised, delineated and set into the site, creating a study model for the structure. Each space was then studied relative to scale in order to understand what the space might feel like. After several months examining the model, the architect met with the client to review and approve the completed model. When approved, the structure was scaled from the model and working drawings were created for the commencement of construction.

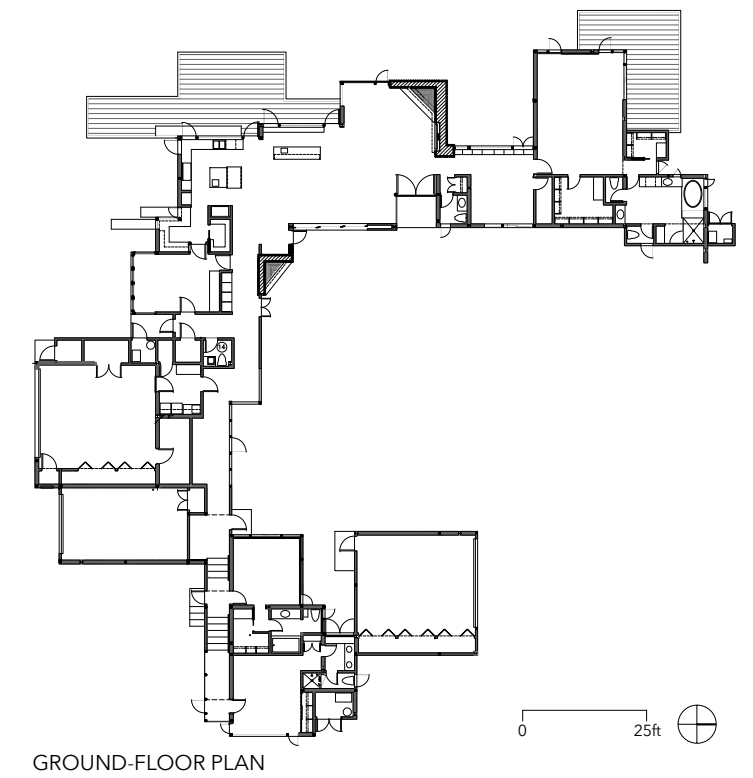
Materials used include steel, wood, glass, and smooth Portland cement plaster. The straightforward post and beam structure utilizes steel I-beams and steel tube columns, with jaw dropping cantilevered overhangs, 25 feet (8 meters) to 50 feet (15 meters), and steel I-beams spanning up to 100 feet (30 meters), as impressive and distinctive features of the home.

Norm Applebaum

# FOX HOLLOW







Location Paso Robles, California Area \*\*\* ft<sup>2</sup> (\*\*\*) m<sup>2</sup>) Completed 2014 Photography John Durant